



# AX3000 Whole Home Mesh Wi-Fi AP

Fast, Elegant, Powerful

HX510

802.11ax

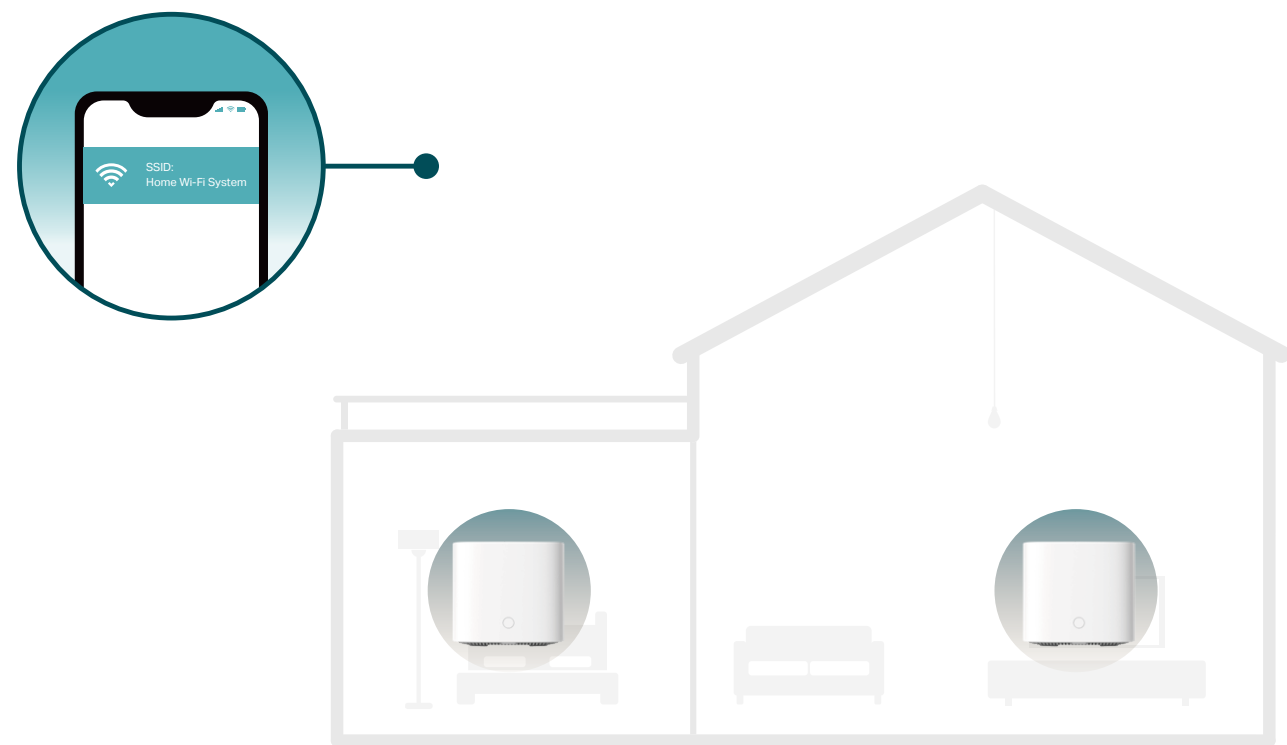
- ▶ 574 Mbps + 2402 Mbps Dual Band Wi-Fi
- ▶ Two Modes in One
- ▶ Full Gigabit Ports
- ▶ EasyMesh Feature Supported



# Highlights

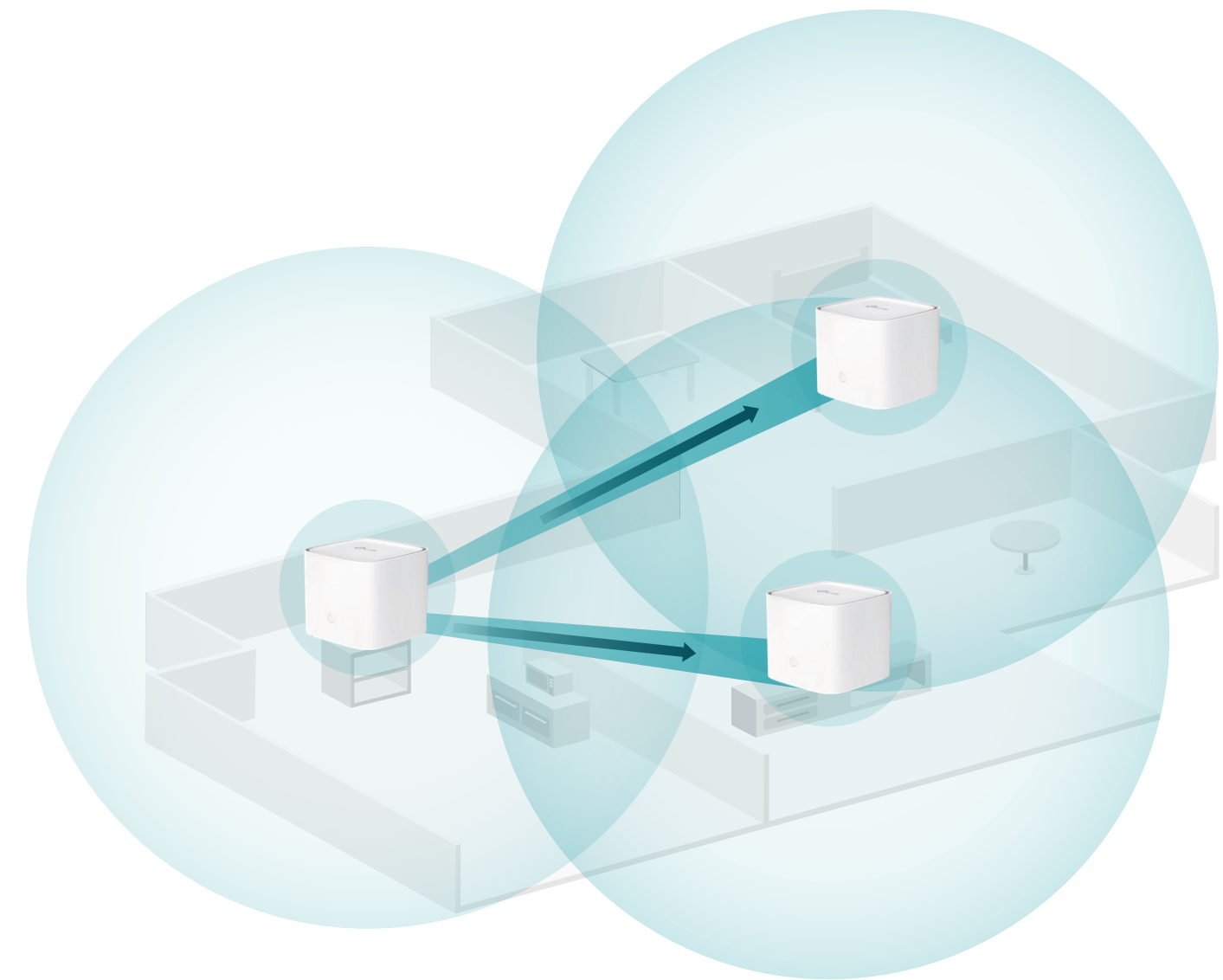
## Seamless Roaming with One Wi-Fi Name

Provided with super coverage via 2-pack or more mesh APs, you can enjoy seamless Wi-Fi in every room. Client Steering & Band Steering intelligently connect devices to the mesh AP with the strongest signal – no more sudden dropout when moving devices to different rooms. A unified wireless network (SSID) is used throughout the whole home.



## Wireless, Hassle-free Installation

Each mesh AP is peer to peer, so after complete the installation of the Main AP, by just pressing the WPS buttons on Main AP and add-on mesh AP, the add-on mesh AP will sync automatically with the Main AP to expand your network.

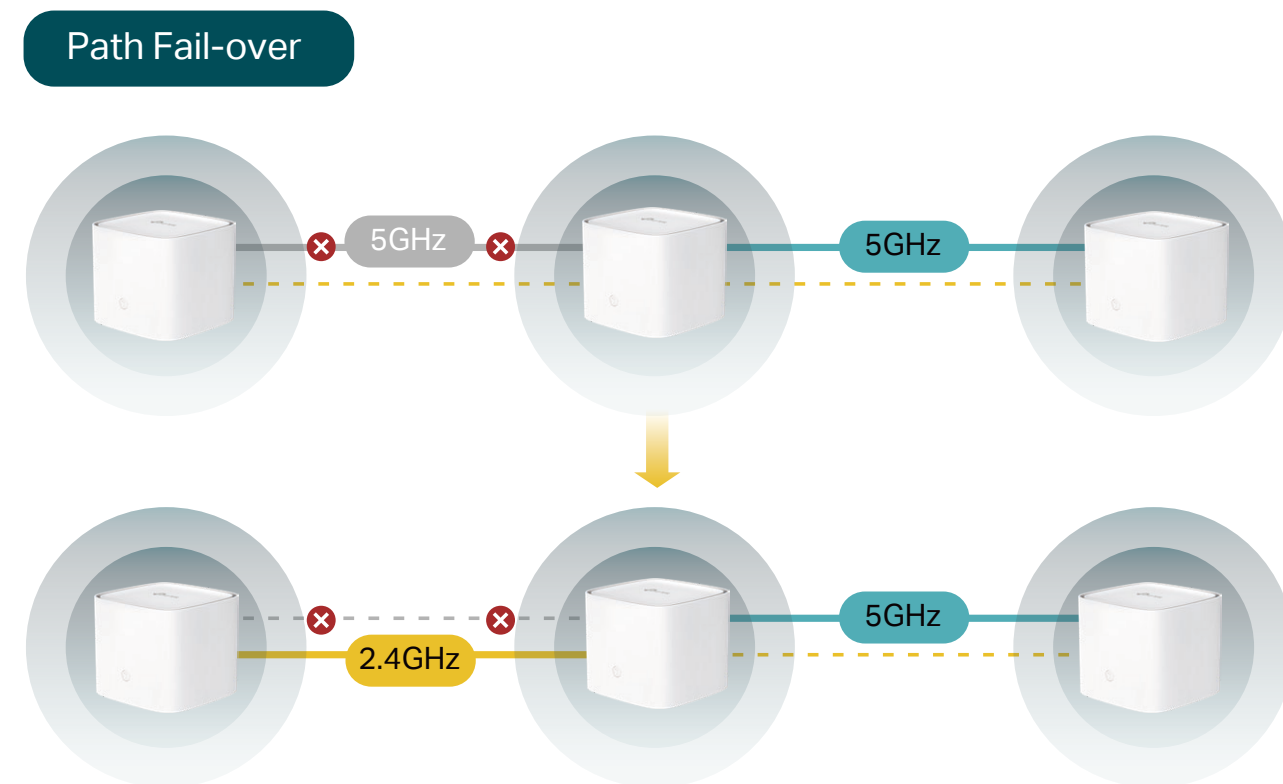


# Highlights

## Robust Smart Wi-Fi Connection

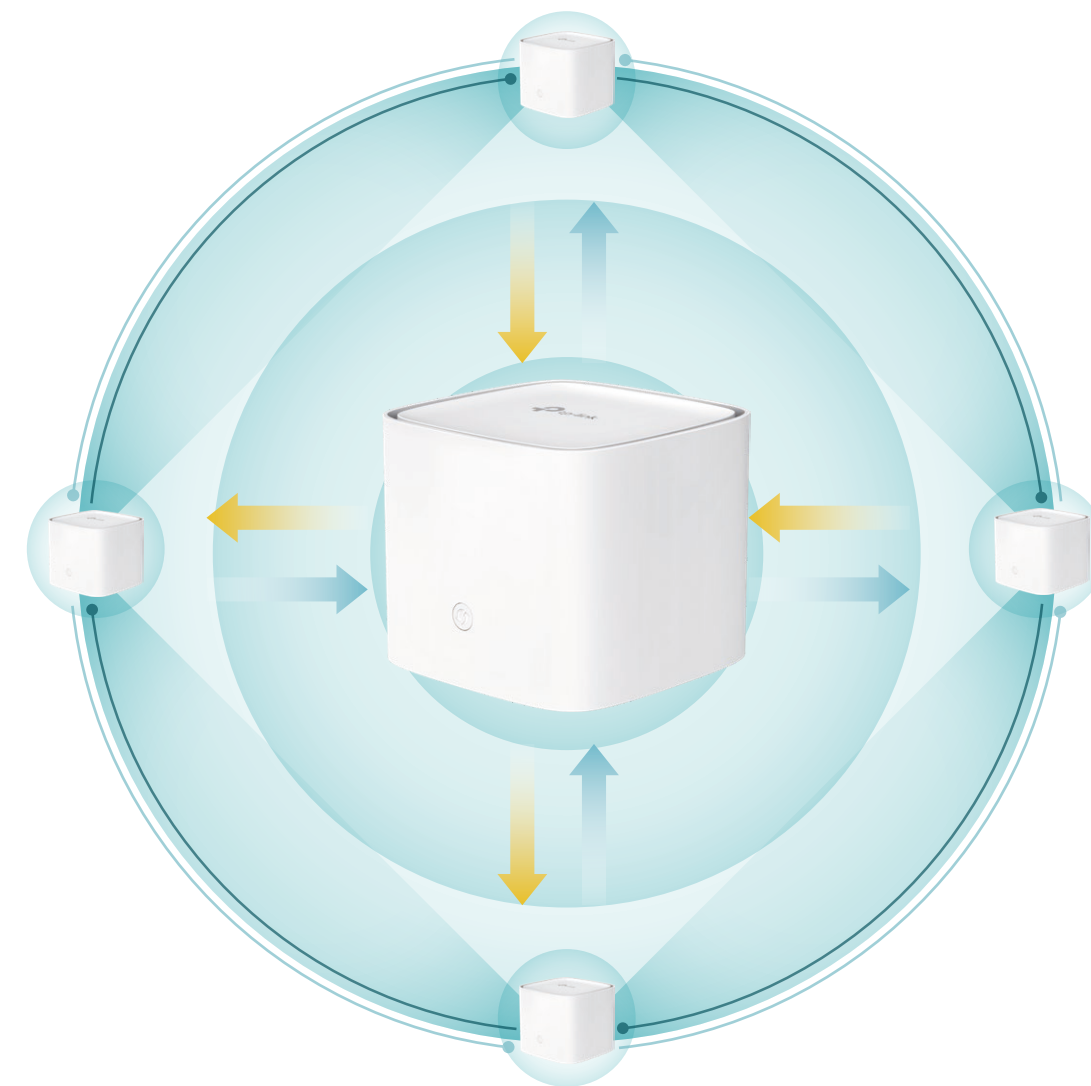
In TP-Link mesh Wi-Fi system, if a link is not usable for any reason, network resources could still be available via a second link as a fail-safe.

■ 2.4GHz ■ 5GHz ■ Not available ■ Network Congestion



## Cater for Standardized Mesh Technology

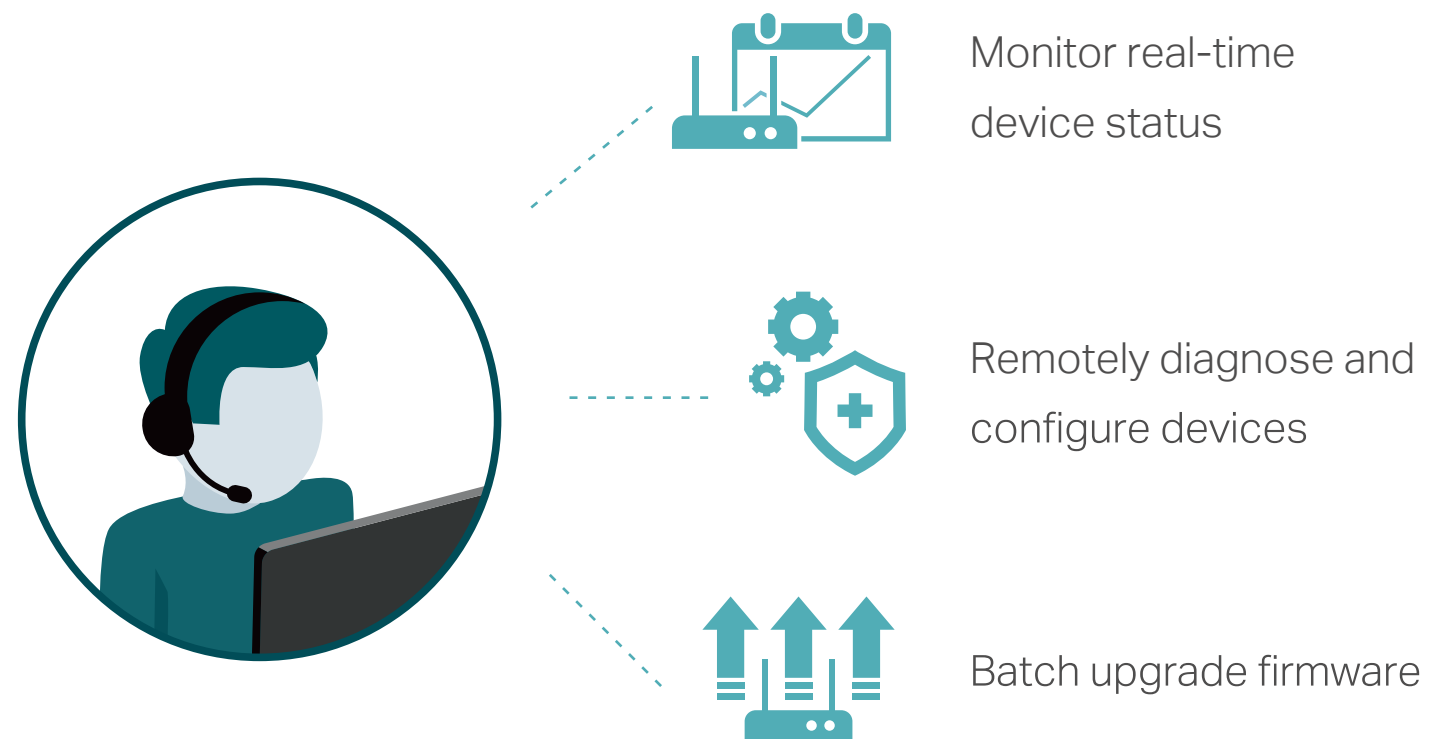
EasyMesh is a standard mesh technology developed by Wi-Fi Alliance. HX510 adopts EasyMesh technology, which has further improved and standardized Wi-Fi functions, such as Wi-Fi diagnostics, channel selection and traffic separation.



# Highlights

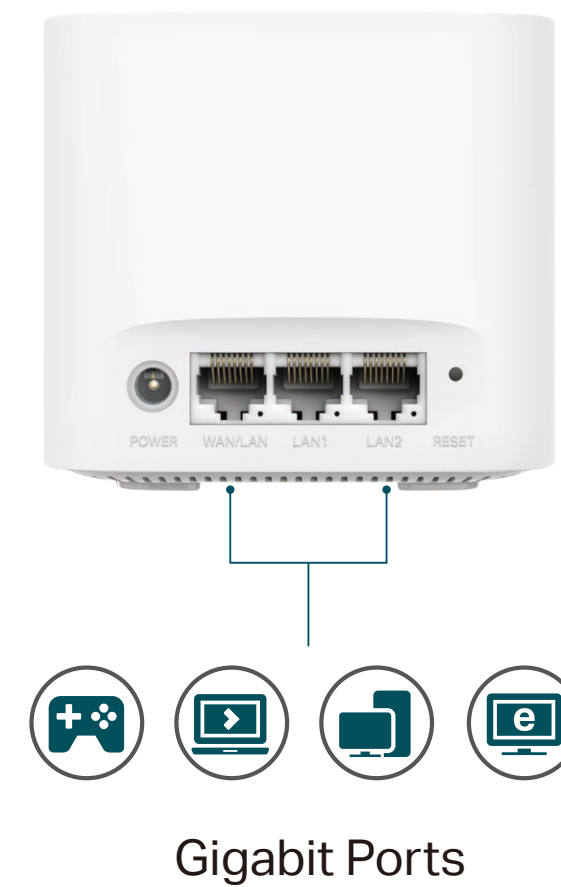
## TR-069 Remote Management

Complied with TR-069 standard, service providers can manage devices remotely without any user interaction. Deployment is simplified while operating and maintenance costs are cut.



## Gigabit Internet Access

Take full advantage of your broadband with speed up to 1 Gbps with a Gigabit WAN/LAN port. Plug your PCs and smart TVs into one of the Two Gigabit LAN ports for fast and reliable wired connections.



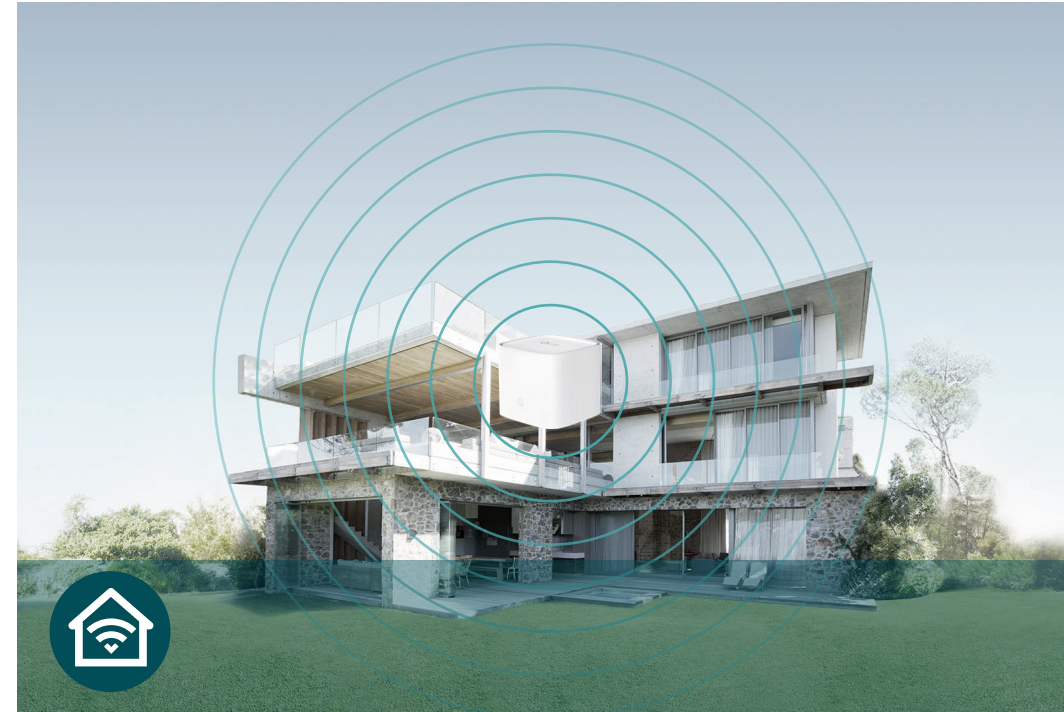


# Features



## Speed

- **Ultimate Wireless Speed** – Support HE160 on 5GHz, combined wireless speeds of up to 574 Mbps (over 2.4 GHz) and 2402 Mbps (over 5 GHz)
- **Gigabit Wired Speed** – 3× Gigabit ports provide sufficient connectivity
- **802.11 ax** – Take your Wi-Fi to the next level while being backwards compatible with 802.11a/b/g/n/ac Wi-Fi standards.



## Wi-Fi Range

- **Optimal Range Wi-Fi** – High-performance internal antennas ensure widespread Wi-Fi coverage and a stable connection
- **Wi-Fi with Beamforming** – Beamforming technology locates the connected devices and further improves the signal strength toward these devices, delivering a more reliable and efficient wireless connection



## Reliability

- **Simultaneous Dual Band** – Separate Wi-Fi bands enable more devices to connect to your network without a drop in performance
- **Path Fail-over** – Network resources could still be available via a second link as a fail-safe when a backhaul link is not usable for any reason
- **Airtime Fairness** – Balances bandwidth to improve throughput and reliability for all connected devices



# Features



## Ease of Use

- Fast Connection – Connect wireless devices securely with the press of WPS button
- Online Upgrade – Support firmware upgrade on the Web UI locally and online upgrade remotely.



## Security

- Multi-SSID – Keep your main network secure by creating a separate network for friends and visitors
- Encryptions for Secure Network – WPA/WPA2/WPA3 Personal, WPA/WPA2 Enterprise provide active protection against security threats
- Parental Control – Manage when and how connected devices can access the internet
- VPN Server – Open VPN, PPTP VPN and IPSec VPN are supported, making it easy to set up a secure connection between your private network and the internet



## Easy Management

- Intuitive Web UI – Ensures quick and simple installation
- Remote Management – Complied with TR-069 standard, which can manage devices remotely without any user interaction

# Specifications

## Hardware

- Interface: 2\*10/100/1000Mbps LAN Ports, 1\*10/100/1000Mbps WAN/LAN Port
- Buttons: WPS Button, Reset Button
- CPU: Dual-Core, 1GHz
- External Power Supply: 12VDC/1.5A
- Antenna Type: Internal antennas
- Dimensions (W x D x H): 4.7 x 4.7 x 3.8 in (120 x 120 x 96.5 mm)



## Wireless

- Wireless Standards: IEEE 802.11a/n/ac/ax 5GHz, IEEE 802.11b/g/n/ax 2.4GHz
- Frequency: 2.4GHz and 5GHz
- Signal Rate: 5 GHz: Up to 2402 Mbps, 2.4 GHz: Up to 574 Mbps
- Transmit Power: FCC: <30 dBm, CE: <20 dBm (2.4 GHz), <23 dBm (5 GHz)
- Wireless Function: 1024-QAM, Beamforming, Band Steering, Airtime Fairness
- Wireless Security: WPA/WPA2/WPA3 Personal, WPA/WPA2 Enterprise

# Specifications

## Software

- Protocols: Support IPv4 and IPv6
- Management: Local Management, Remote Management, TR-069(TR-098/TR-181), TR-111, TR-143
- Multi-SSID: Up to 4 SSIDs for each band
- DHCP: Server, Client
- Firewall Security: SPI Firewall
- WAN Connection Type: Dynamic IP/Static IP/PPPoE/L2TP/PPTP
- Working Mode: Router, Access Point
- Mesh: EasyMesh, IEEE 802.11k/v/r, Ethernet Backhaul, Seamless Roaming
- Support IPTV, IGMPV2/3 and IGMP Snooping
- Quality of Service: WMM
- Parental Controls
- LED Schedule
- Wi-Fi Schedule

## Others

- Certification: CE, FCC
- System Requirements:  
Internet Explorer 11+, Firefox 12.0+, Chrome 20.0+, Safari 4.0+, or other JavaScript-enabled browser  
Cable or DSL Modem (if needed)  
Subscription with an internet service provider (for internet access)
- Environment:  
Operating Temperature: 0°C~40°C (32°F~104°F), Storage Temperature: -40°C~70°C (-40°F ~158°F)  
Operating Humidity: 10%~90% non-condensing, Storage Humidity: 5%~90% non-condensing
- Package Contents:  
AX3000 Whole Home Mesh Wi-Fi AP  
Power Adapter  
RJ45 Ethernet Cable  
Quick Installation Guide

