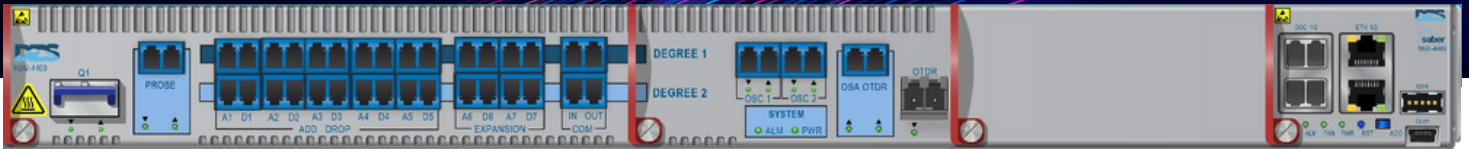




# RDM-4400



## Reconfigurable Optical Add-Drop Multiplexer for SABER-4400

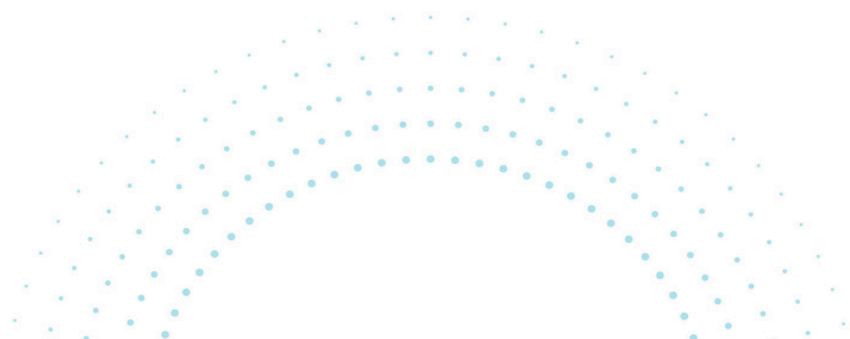
RDM-4400 is an expandable, full 2-degree, FlexGrid, Reconfigurable Optical Add-Drop Multiplexer (ROADM) for use in SABER-4400 shelf.

### Features & Benefits

- + CDC-FlexGrid support
- + Integrated Add/Drop ports
- + Optional integrated OTDR for line segment analysis
- + Optional integrated Coherent Probe for end-to-end testing
- + Integrated Optical Spectrum Analyzer (OSA) for automatic power balancing and optical power monitoring
- + Integrated Pre- and Post- amplification
- + Integrated Graphical Shelf Manager (OSM)
- + Software-configurable, guard-railed alien wavelength/alien spectrum ports for transporting third-party wavelengths/ spectrum across the network
- + NETCONF/YANG managed
- + Network managed by DZS Xtreme and third-party solutions

The RDM-4400 will change the way you think about deploying ROADMs in your network. The RDM-4400 is an expandable, full 2-degree, FlexGrid, Reconfigurable Optical Add-Drop Multiplexer (ROADM) for use in a SABER-4400 shelf. Unique in the industry, the RDM-4400 is NEBS-3 compliant and supports extended temperature range deployments. This compact and hardened FlexGrid RDM-4400 can be deployed anywhere, from a temperature-controlled Central Office or hub site, to a standard outside plant cabinet.

The RDM-4400 is a three-slot sled that installs in the four-slot, 1 RU SABER-4400 platform. When combined with any one-slot FOX (Flexible Optical X-connect) sled, the system works as a full 2-degree CDC-FLEX ROADM with easy expandability up to 8 degrees.



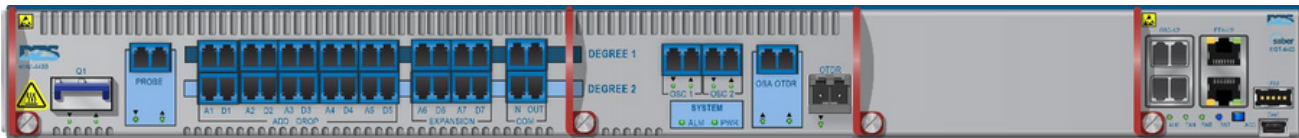


Reconfigurable Optical Add-Drop Multiplexer

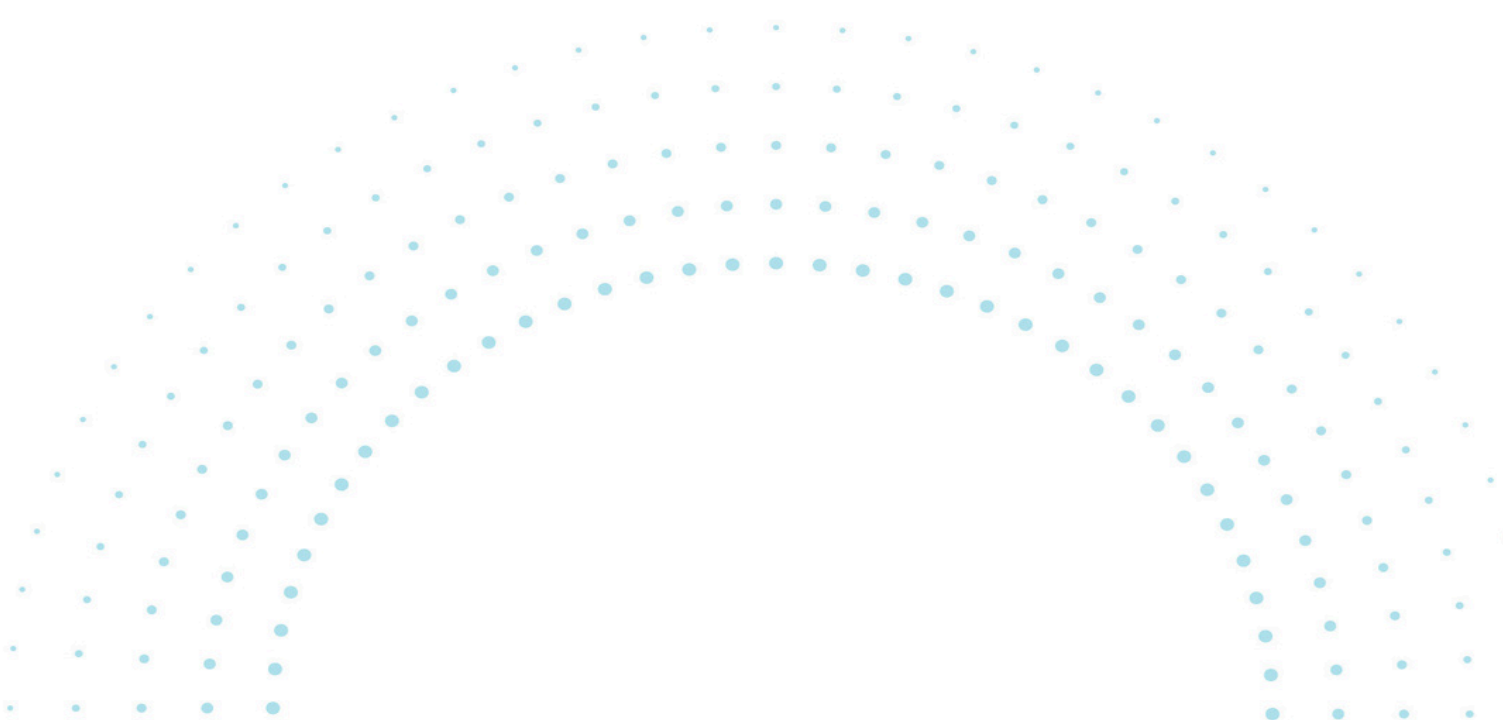
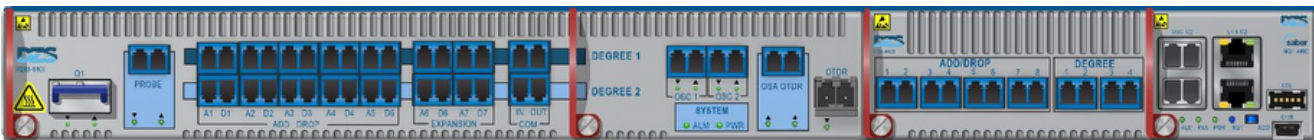
# RDM-4400



RDM-4400 in a SABER-4400 shelf (with 1 filler card)



RDM-4400 and FOX-4408 in a SABER-4400 shelf



## Reconfigurable Optical Add-Drop Multiplexer

# RDM-4400



## Product Specifications

### Compact



Full 2-degree CDC-FLEX ROADM in 1 RU Full 4-degree CDC-FLEX ROADM in 2 RU Up to 14 reconfigurable Add/Drop ports per degree

### Expandable

+ Easily expandable to an 8-degree ROADM by adding RDM-4400 sleds; 2 degrees per additional RDM-4400 sled

### Interoperable

+ Designed to align with OpenROADM MSA specifications and associated OpenROADM data models

### Hardened

+ + Support for full extended temperature range  
NEBS Level 3 and GR-3108 Class 2 compliance

### Related Product Families

+ + Deploys in the scalable SABER-4400 platform  
Works with the TMX-4400 family of Transponders and Muxponders, FOX-44XX family of Optical X-Connect and Add/Drop sleds, OFA and RMN family of amplifiers, and PPM-44XX family of path protection modules

## Specifications

Parameter	Attribute
Channels	FlexGrid on 6.25 GHz spacing
Line Degrees	2 degrees per RDM-4400
Expansion Ports	Expandable to 8 degrees
Add/Drop Ports	14 per degree including expansion ports
Optical Spectrum Analyzer	Resolution bandwidth is 1.7 GHz. Power accuracy measurement is +/- 0.5dB Frequency range is 191.250 to 196.125 THz Slice width 3.125 GHz
Pluggable Modules	SFP+ OTDR QSFP-DD Coherent Probe
Size	3 slots in the SABER-4400 platform
Power Consumption	70 Watts
Operating Temperature	-40°C to 65°C (-40°F to 149°F) when deployed in a SABER-4400 platform
Operating Humidity	5% to 95% relative non-condensing

## Ordering Information

Model Number	Description
RDM-4400	Part Number: 1017-5035 RDM-4400, 2D FlexGrid ROADM, Expandable to 8 Degrees
CPO-3505	Part Number: 1029-3505 QSFP-DD 100-400G DCO
OTDR-6000	Part Number: 1032-6000 SFP, OTDR, 50 km, 1611 nm



© 2023 | All Rights Reserved