

SuperPod™ WiFi 7



SuperPod with WiFi 7: Optimized for Performance

From remote work and virtual learning to 4K streaming and smart home automation, today's homes and small businesses demand more from WiFi. The SuperPod with WiFi 7 helps your network keep up—minimizing dead zones, lag, and frustration.

Fast. Reliable. Optimized.

Plume's SuperPod with WiFi 7 delivers lightning-fast, intelligent connectivity across your entire network. It adapts in real time to your usage and environment—so you always get the best possible performance for streaming, gaming, video calls, and more.

Key features



320 MHz Channels

SuperPod with WiFi 7 doubles the maximum channel bandwidth from 160 MHz (in WiFi 6/6E) to 320 MHz, allowing more data to be transmitted simultaneously—great for ultra-fast internet and multi-gigabit performance.



Multi-Link Operation (MLO)

MLO allows devices to simultaneously connect on multiple bands (2.4 GHz, 5 GHz, and 6 GHz). This results in higher throughput, lower latency, and increased reliability.



Dual 2.5G Ports

2x 2.5G Base-T Ethernet with autosense WAN or LAN configuration ports unlock impressive speed and reliability for wired connections and 2.5G wired backhaul option.

Benefits



Whole-Home or Business Connectivity

Blanket your entire home or small business with strong, consistent signal—no matter how many devices are online.



Smarter, Faster Performance

Plume's adaptive cloud technology continuously optimizes your network in real time for superior speed and reliability.



Easy, Flexible Setup

Plug into any wall outlet for hassle-free installation and scalable coverage.



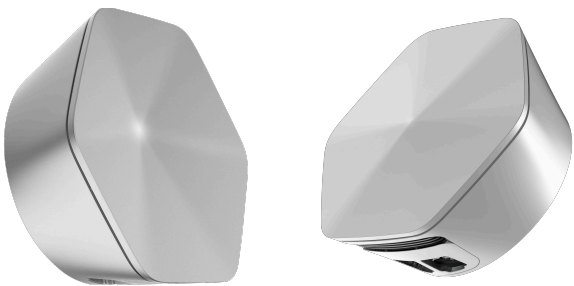
Sleek and Modern Design

With its minimalist silver finish, the SuperPod with WiFi 7 blends seamlessly into your home or small business, while replacing bulky, outdated gateways.



SuperPod™ WiFi 7

Specifications



WiFi specification

Radios	6GHz Upper 4x4 MIMO 802.11 ac/ax/be 5GHz Lower 3x3 MIMO 802.11 n/ac/ax 2.4GHz 2x2 MIMO 802.11 b/g/n
Channels	1-13 2.4GHz 6GHz Lower 36-64 5GHz Upper 100-161
Channel BW	2.4GHz 20/40MHz 5GHz Lower 20/40/80/160MHz 6GHz 320Mhz
DFS Support (region dependent)	5GHz Lower 52-64 5GHz Upper 100-144
Antennas	3x5GHz, 4x6GHz 2 x 2.4GHz & 5GHz shared

Protocols

Authentication	WPA2-PSK and WPA3-SAE
Encryption	AES and PSK with KRACK fix
Operating Modes	Router with NAT/Firewall or Bridge
Firewall and Networking	SPI, NAT, and DHCP server IPv4 and IPv6 hybrid support
Prioritization	Queue processing based on traffic flow type
Home SSIDs	Managed 2.4GHz/5GHz Single SSID
Guest Access	Custom password ACL with HomePass Access
Community SSID	Managed 2.4/5GHz Single SSID with GRE tunnel
ACL	MAC, IP, and application control
Certification	FCC, CE, UL, IC, ROHS, PROP 65, REACH, WEEE BT SIG, WFA WiFi Certification

Interfaces and physical attributes

WiFi Radio Configuration	
WiFi Capacity	AX6600, Tri-band with 320MHz
Ethernet	2 x 2.5G GbE
Plug Type	North America, Japan, EU, and UK
Color	Silver, Champagne

Operating conditions

Power Consumption	100-240VAC, 50-60Hz Idle: 6W Average (25% duty cycle): 10W Peak power (75% duty cycle): 18W
Operating Temperature	0 °C to 40 °C
Operating RH	10% to 90% RH non-condensing
Storage Conditions	-20 °C to 70 °C 10 to 90% RH non-condensing

Why partner with Plume?

Plume’s solutions help CSPs reduce churn and increase ARPU.*



*Data based on an average taken across Plume’s deployed CSP customer base.