

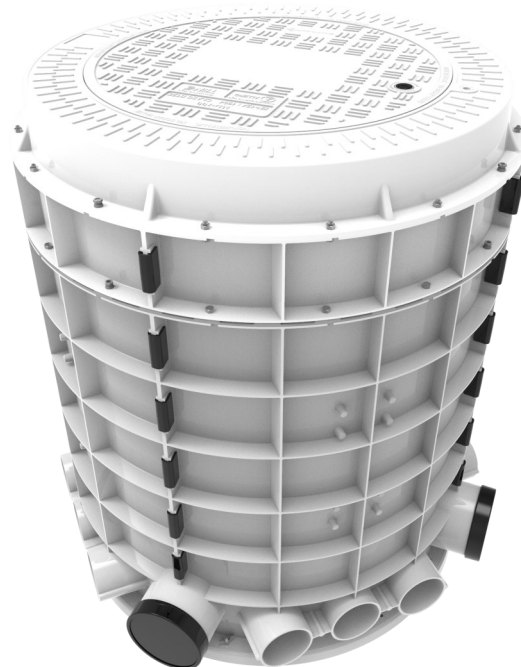
## OVERVIEW

This Chamber is a pre-kitted solution for fibre distribution and is deployed in applications where fibre distribution frames need to be installed underground to conceal their presence, improve their security or when surface space is limited, restricted or at a premium in terms of time to market or cost of deployment.

Fibre distribution frames require a completely dry environment to function optimally. In addition, full access management and monitoring of the internal environment of the chamber are required to ensure the network integrity is maintained. The monitoring system raises alarms when pre-set thresholds in temperature, vibration, humidity and light are exceeded.

This Sealed Chamber is fitted with an extractable, standard 19" rack, 15U or 22U workable space above ground, complete with fibre slack management bobbins, cable transportation tubes and a mechanical rack extraction system. The Chamber contains a dual re-enterable lid system, for security and for water-tight sealing.

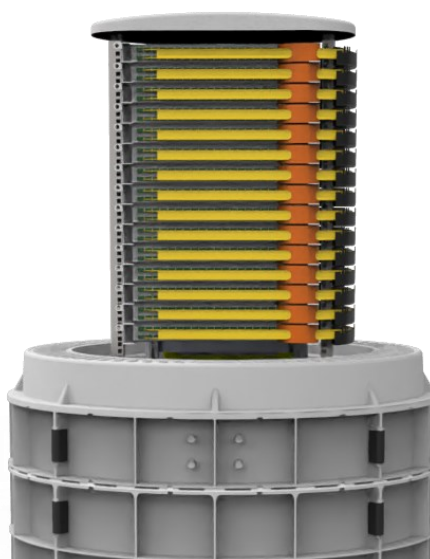
The Sealed Chamber complies with the recognised European standards in respect of load bearing and impact strength. The Chamber is cylindrical in shape, and it provides for sealed micro-duct entries. All the components of the Chamber are manufactured and tested in a quality assured factory environment, certified to ISO 9001.



22U Rack



15U Rack



## MATERIALS

Lid, frame, side panels and base plate	UV stabilised glass reinforced polyester in sheet moulded format; 30% glass fibre content (SMC)
Latch and alignment plate	Thermoplastic
Clips, latches and fibre management items	ABS plastic
Metal components and fasteners	Stainless steel 304

## STANDARDS

Load bearing and impact strength	ANSI/SCTE 77—TIER 22
Ingress protection	IP68
Factory tests	Pressurised air tests

## ACCESS CONTROL AND MONITORING

Access management	Mechatronic lock, operated by Smartkey
Monitoring	NB-IoT sensor, measuring vibration, light, temperature and humidity. Alarms are raised when pre-set levels are exceeded. Alarms are correlated by access management system to eliminate false alarms.

## LIDS

Secure lid	Raised non-slip pattern (65% of surface area), branded
Internal sealing lid	Dome shaped, with 6x sealing handles and silicone rubber compression seal

## DUCT ENTRY PORTS

	14x 14/10 sealed micro-duct entries
--	-------------------------------------

## FIBRE CABLE MANAGEMENT

	Transportation tubes to protect fibres during rack movement (7x in, 7x out)
--	---

## RACK (19")

Capacity	15U or 22U Workable Space above ground
Extraction mechanism	Screw drive shaft, operated with electric drill

## MASS

	352.74lb (15U), 441lb (22U), fully assembled
--	--

## CARRY CAPACITY OF RACK

	220.5lb(15U), 441lb (22U)
--	---------------------------

## PRIMARY DIMENSIONS

	Daylight opening: 23.6", depth of sealed section of chamber: 39.4" (15U); 53.31" (22U), external height: 49.2" (15U); 60.2" (22U)
--	---

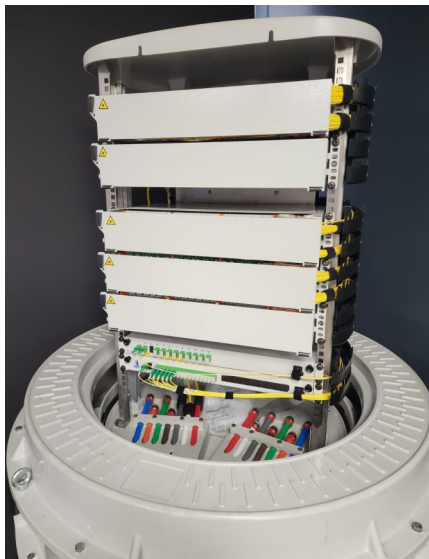
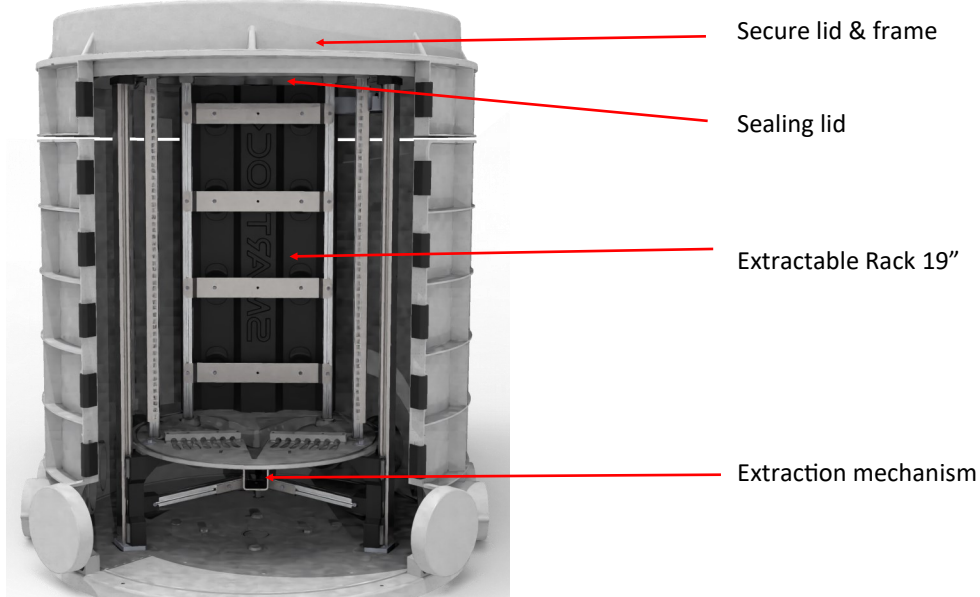
## WARRANTY

	15 years manufacturer's warranty
--	----------------------------------

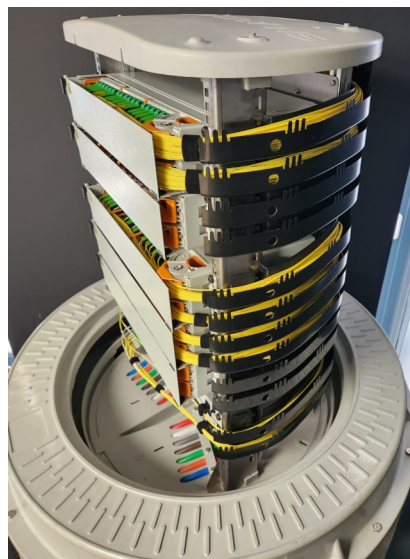
## OPTIONAL EXTRAS AND ACCESSORIES

- Custom tarpaulin and dust ring to prevent dust entry upon use
- Fibre protection shield, front cover and base plate
- Pre-configured monitoring variables
- Compression glands for specific duct entry ports
- Lifting lugs

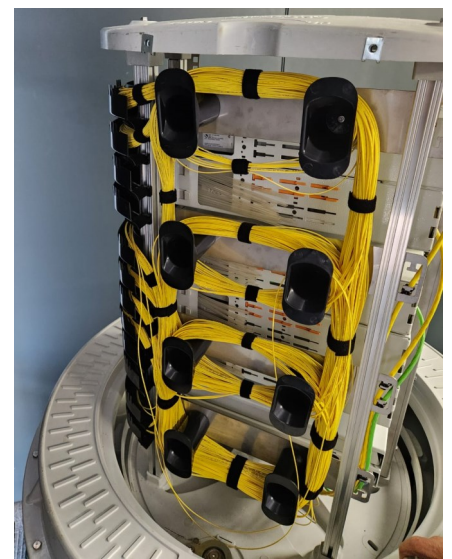
## Components



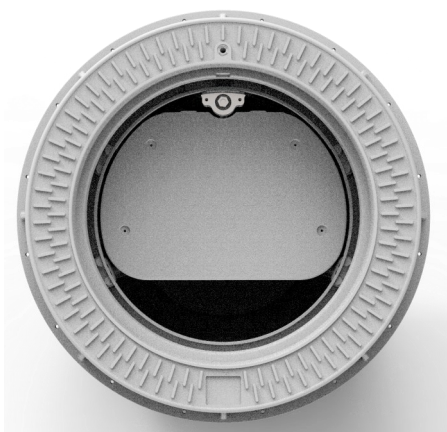
*Rack Populated  
(Front view)*



*Rack Populated  
(Side view)*

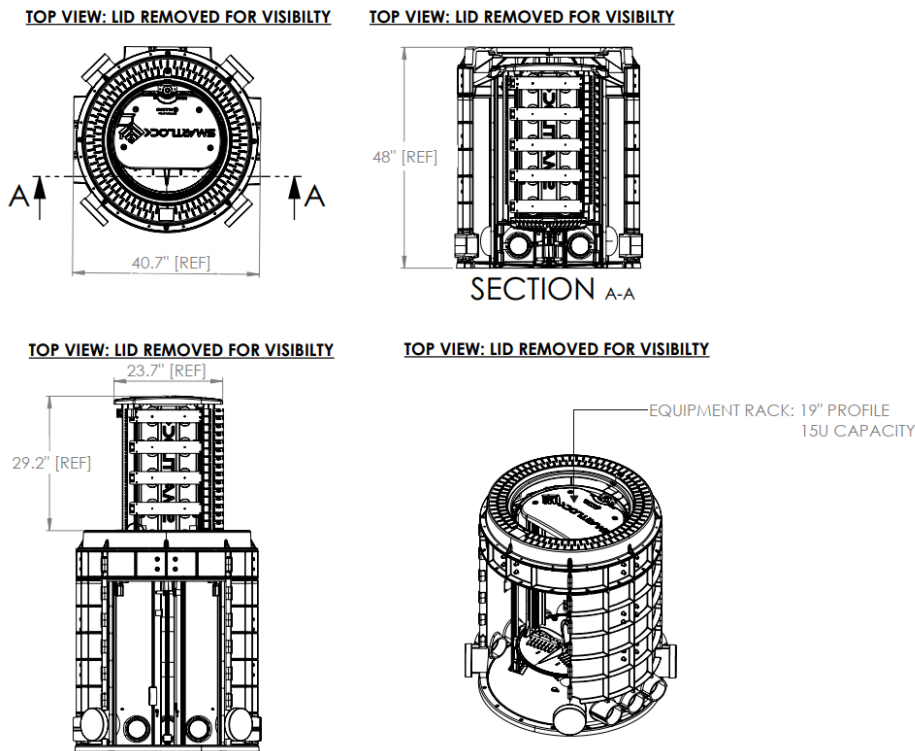


*Rack Populated  
(Back view)*



*Rack view; top  
view*

15U Chamber Technical details



22U Chamber Technical details

