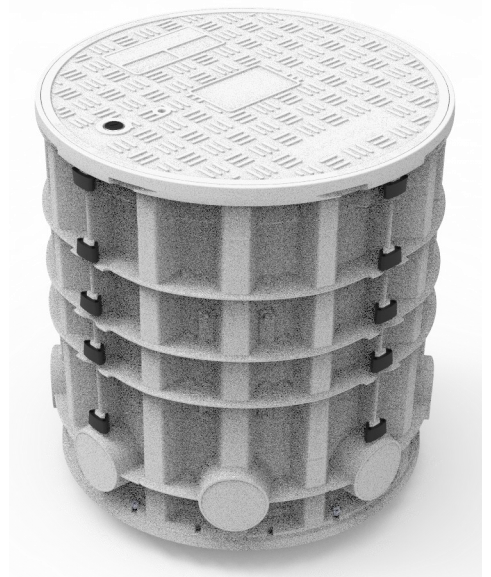


## OVERVIEW

The RNC-600 manhole is deployed in buried telecommunications and other utility infrastructure complementary to blown fibre cable applications. It is modular to achieve flat-stack packaging. The manhole chamber is cylindrical to maximise strength and internal space utilisation. It features a split entry design, to accommodate drop-in installation over existing ducts of various diameters. All its components are manufactured in a quality assured factory, certified to ISO 9001.

The chamber incorporate a mechanical locking mechanism and is available with a feature enabling unique identification and automated GPS positioning of its location. Fibre cable and slack are stored orderly, allowing for additional cables to be added during the lifespan of the chamber.

An electronic locking solution and an IoT environmental sensor are available optionally, to remotely manage access to the manhole and to monitor the environment inside it and receive alarms when pre-determined levels of vibration/impact and light are exceeded.



## TECHNICAL INFORMATION

### MATERIALS

Lid, frame, side panels and base plate	UV stabilised glass reinforced polyester (GRP) in sheet moulded (SMC) format; 30% glass fibre content
Latch and alignment plate	Thermoplastic
Assembly clips	ABS plastic
All metal components and fasteners	Stainless steel 304

### STANDARDS

ACCESS CONTROL: Standard	Mechanical locking and opening mechanism
ACCESS CONTROL: Optional	Access controlled mechatronic lock

COVER	Raised non-slip pattern (100% of surface area), branded
-------	---

DUCT & SLEEVE ENTRY PORTS	8 off 4.33" diameter, normally sealed with knock-out section
---------------------------	--

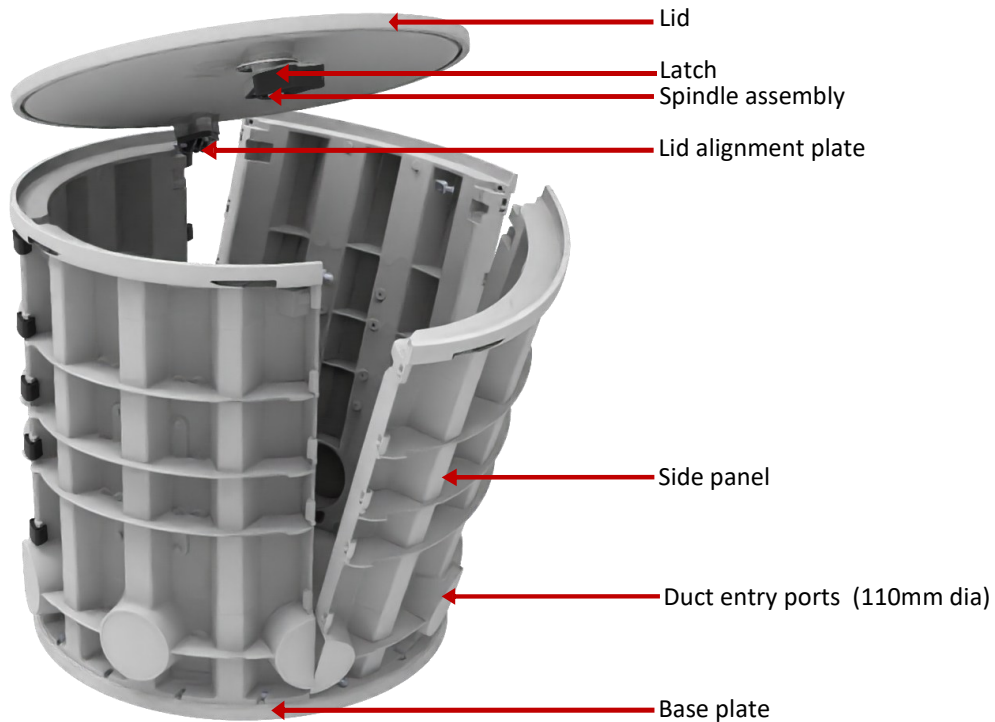
MASS	70.55lb, fully assembled (max mass of any single component: <15.4lb)
------	--

PRIMARY DIMENSIONS	Daylight opening: 32.62", chamber depth: 26.97"
--------------------	---

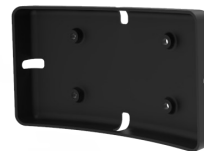
WARRANTY	15 years manufacturer's warranty
----------	----------------------------------

# EXPANDED VIEW AND ACCESSORIES

## Components



*Split 180 deg duct ports*



*Fibre management*



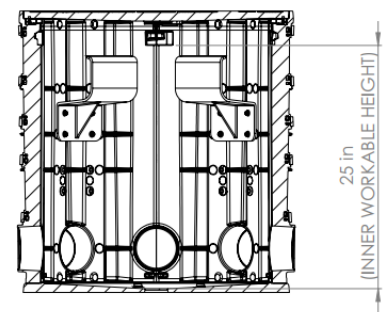
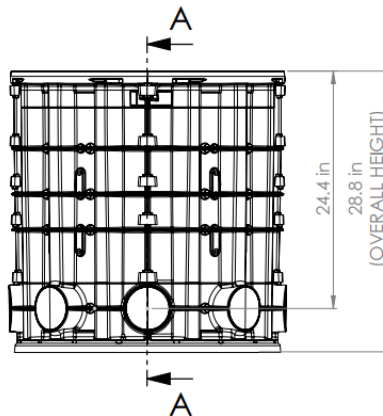
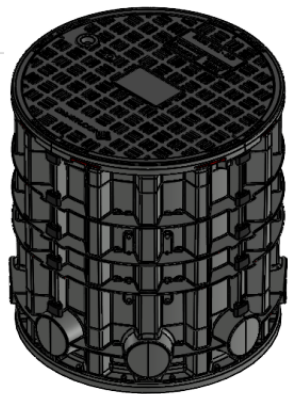
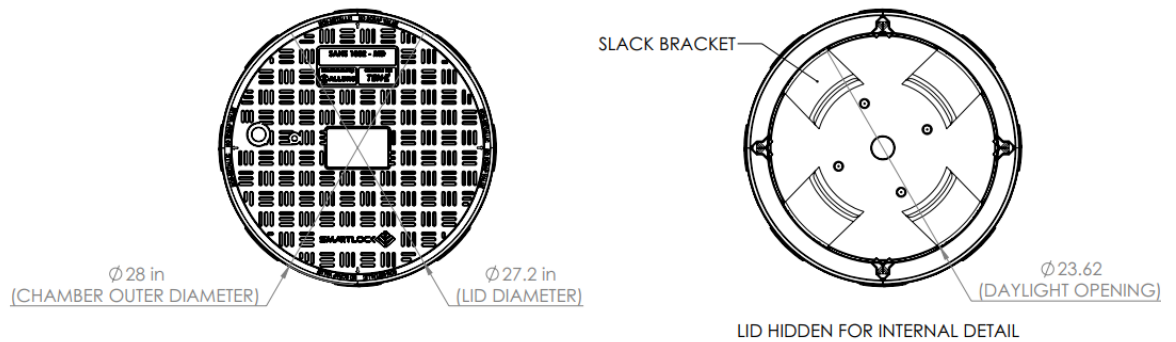
*Slack bracket (4x per manhole)*



*Compression seals*



# TECHNICAL DRAWING: STANDARD UNIT



SECTION A-A

